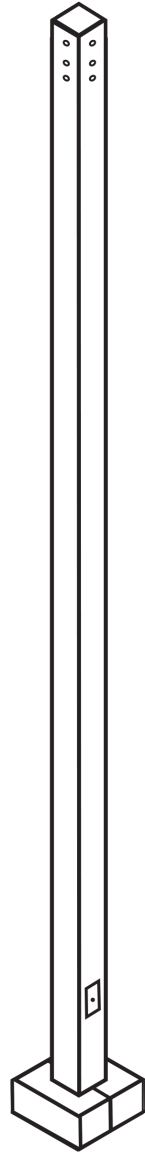




# STEEL SQUARE POLES

MODEL # GB-SSP44G | 120- | 125- | 130

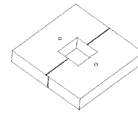


## DESCRIPTION & FEATURES

### 4" X 4" SQUARE STRAIGHT STEEL POLE

- Base cover included
- Base plates - 36,000 p.s.i. minimum yield
- Reinforced handhole with grounding lug and removable cover
- Removable top cap included, tenon and pole accessories available
- Four galvanized anchor bolts with galvanized hardware
- Anchor bolt template included
- Windage and EPA available upon request

HEIGHT	GAGE	L X W	MODEL #
20'	11	4" X 4"	GB-SSP44   120
25'	11	4" X 4"	GB-SSP44   125
30'	11	4" X 4"	GB-SSP44   130



BASE PLATE 5"x 5"  
INCLUDED



BOLT CIRCLE TEMPLATE  
INCLUDED

